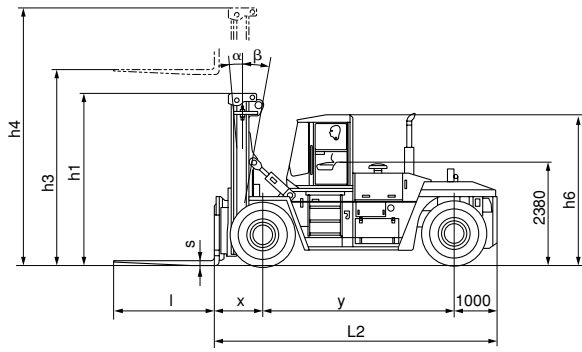
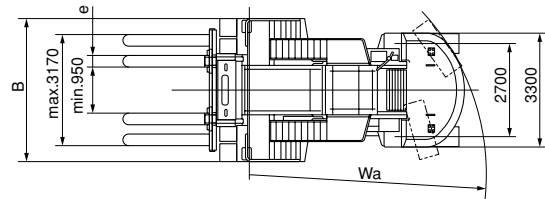
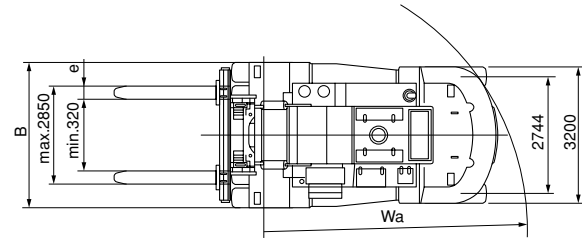
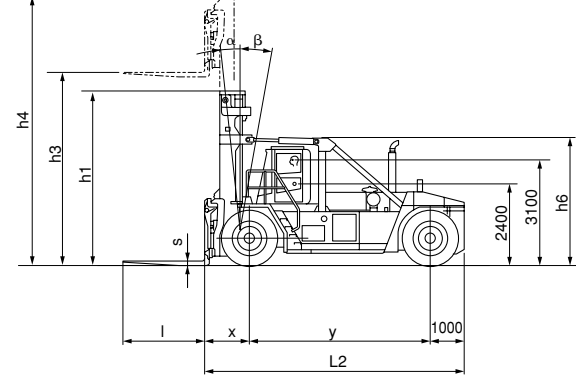


Heavy Forklift Trucks HX50/JX50 Series

FD280-3
FD320-3



FD420-3
FD450-3



Forklift Trucks

Model	Characteristics			Weight	Dimensions										Tyres	
	Max. Capacity (kg.)	Wheelbase (mm)	Load Distance (mm)		Length, to Face of Forks (mm)	Width, at Tyres (mm)	Height, Overhead Guard (mm)	Std. Fork Height (mm)	Height, Mast Lowered (mm)	Height, Mast Extended (mm)	Tilting Angle (degree)	Fork Size (mm)				Turning Radius (mm)
	y	x		L2	B	h6	h3	h1	h4	α/β	s	e	l	Wa		
FD280-3	28000	4500	1165	40200	6665	3450	3485	5000	4550	7050	5/10	110	300	2400	6220	16.00-25-32PR
FD320-3	32000	4750	1165	42500	6915	3450	3485	5000	4550	7050	5/10	110	300	2400	6460	16.00-25-32PR
FD420-3	42000	5300	1305	58000	7605	4160	3800	5000	5200	7700	5/10	135	310	2400	6980	18.00-25-40PR
FD450-3	45000	5800	1305	61500	8105	4160	3800	5000	5200	7700	5/10	135	310	2400	7550	18.00-25-40PR

Standard Equipment

- CAN-Bus management system
- Air conditioner
- Side shift fork positioner
- Joystick lever
- Hydraulic system based on variable displacement pump technology
- Load sensing distributor to reduce fuel consumption
- Anti-tip/overload safety device
- Wet disc brakes with oil cooling system
- Full hydraulic power steering
- 4 extra working lights
- Automatic transmission

Options

- High cabin
- Rear and front view CCTV
- Additional seat
- Automatic centralized lubrication

Optional Specification Truck

- Container spreader
- Pipe clamp
- Ram
- Detachable fork

For other options and attachments, please consult with your Komatsu dealer. Features and specifications may vary in different countries and regions. Please contact your Komatsu dealer to confirm machine details in your region. Forklift trucks in this catalog may be shown with optional equipment. Komatsu products and specifications are subject to change without notice. The performance values indicated herein represent nominal values obtained under typical operating conditions.

Komatsu Utility Co., Ltd. FORKLIFT COMPANY

Head office: 2-4-1, Shiba-koen, Minato-ku, Tokyo 105-0011, Japan

URL: <http://www.komatsu-utility.com>

Fax: +81-3-3433-3120

Form No. BR-HXJX50-002-ENG
Printed in Japan 0907-1-03Shi

KOMATSU

Heavy Forklift Trucks HX50/JX50 Series

28 - 45 ton



FD280-3/FD320-3
FD420-3/FD450-3

KOMATSU FORKLIFT

Superior Productivity More than Enough Power and Speed for Heavy Works

LOW TOTAL OPERATING COST

Powerful load handling and operator comfort to increase operator concentration. The new HX50/JX50 Series provides cutting-edge technology for optimum control of the engine and hydraulic system for maximum productivity, with lower fuel consumption for reduced total operating cost for customers.



Enhanced Safety and Comfort

- **Complying with ISO standards, the advanced steel frame cabin** is developed from the standpoint of higher ergonomics. Excellent visibility, the overall controls layout and low noise insulation with standard equipped air conditioning provide maximum comfort even for long haul working environment.
- **The fully enclosed wet disc brakes** ensure smooth and effective braking without requiring complicated maintenance to minimize general running costs.
- **An alarm comes on instantly** when the equipment is in danger of over-loading or over-tipping to ensure safer operation under all conditions.
- **Another plus is a new engine that meets the latest EPA Tier 3/EU stage IIIA** exhaust emission regulations. Reducing exhaust emission levels of smoke, NOx and other substances, this engine helps to provide a cleaner and environmentally friendly worksite for comfort.



*Photos include vehicles equipped with options.

Superior Productivity

- **A powerful new engine, combined with the most efficient variable displacement pumps** with load sensing system and quality reliable mast, can provide higher residual capacity and create a robust and higher work cycle.
- **Since the boom and spreader are controlled with an electrical multifunctional joystick**, speedy and precise work is ensured.
- **The standard equipped side shift fork positioner** provides maximum flexibility for various types of work for effective load handling.
- **The CAN (Controller Area Network)-Bus system** integrates the engine, hydraulic and electrical systems to ensure powerful and smooth operation, as well as maximum fuel efficiency. The CAN-Bus also manages vehicle data including system diagnosis.

